

BRIDGE TO EMPLOYMENT

---

# Student Ambassador Showcase

fhi360

Bridge to  
Employment  
*Johnson & Johnson*

BRIDGE TO EMPLOYMENT

---

# Team 4



Team Clover

**WELCOME**





# Meeting the Team

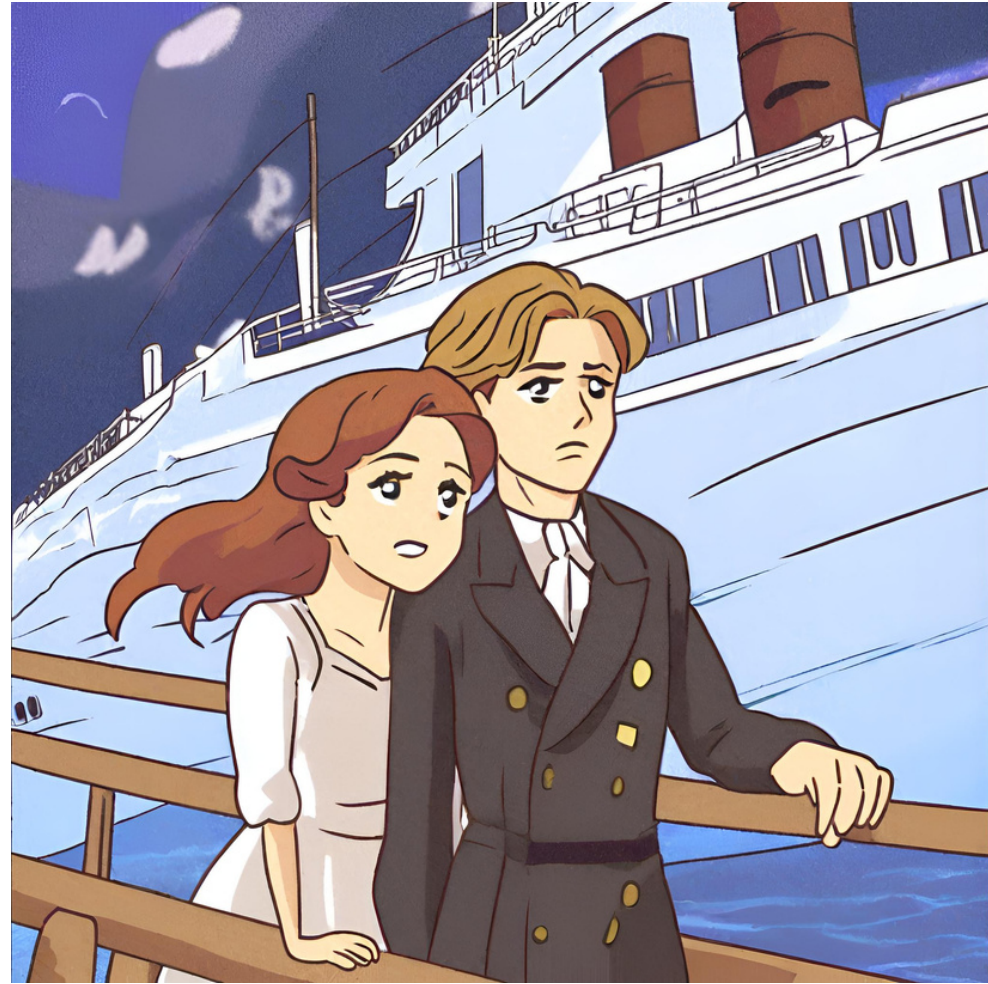
Trenton, NJ, U.S- J.J and Nayeishka

Sydney, NSW, Australia- Riley

High Wycombe, Eng, UK - Matthew

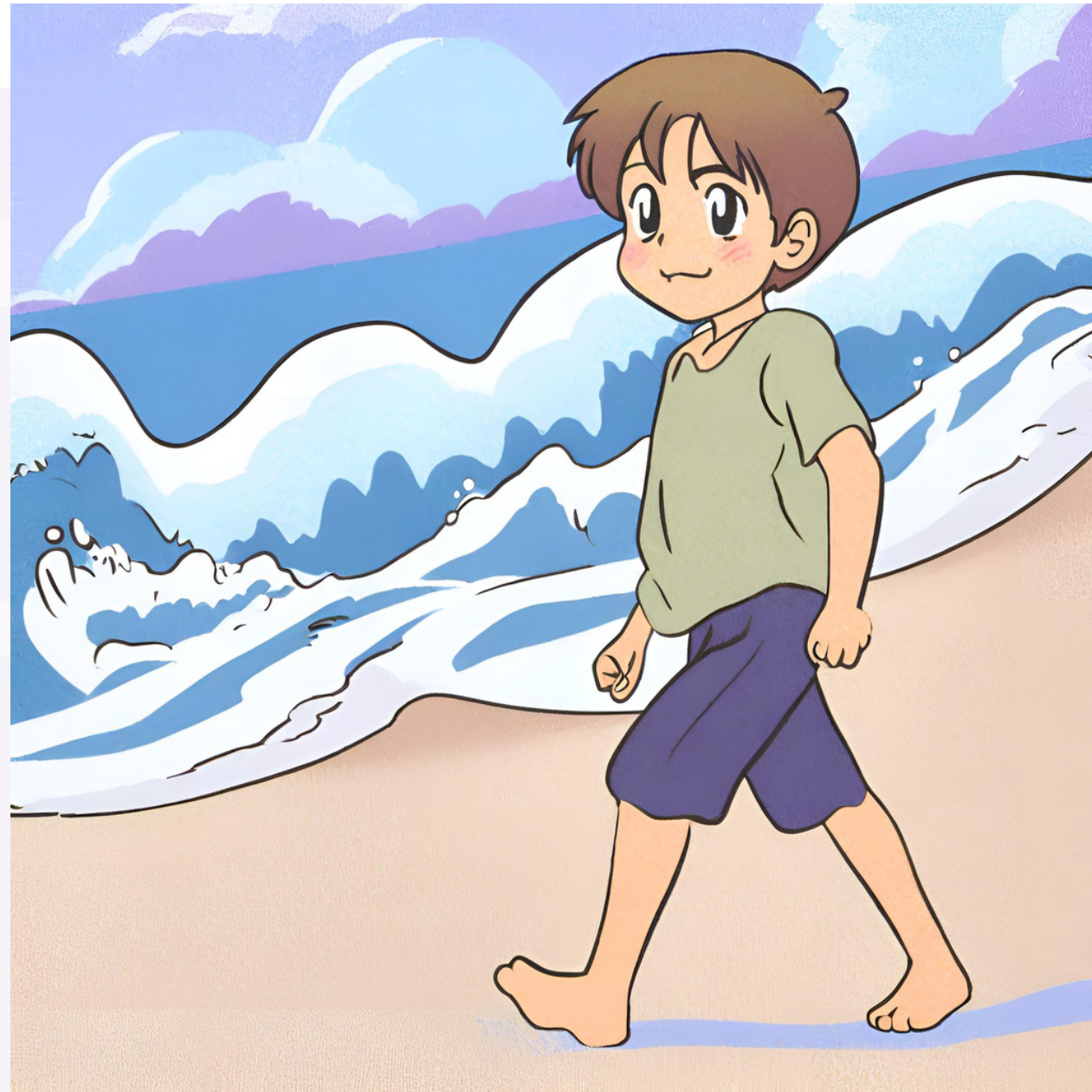
Warsaw, IN, U.S- Annalisa

# Theme



# Challenge #1

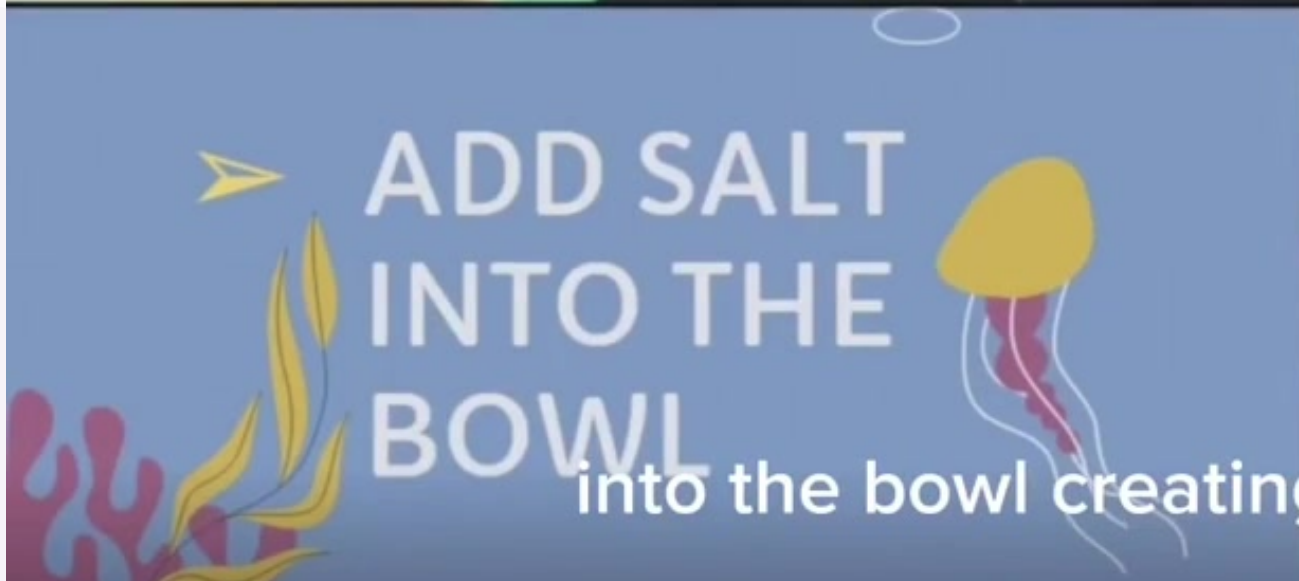
To develop a desalination system



# FIRST STEP

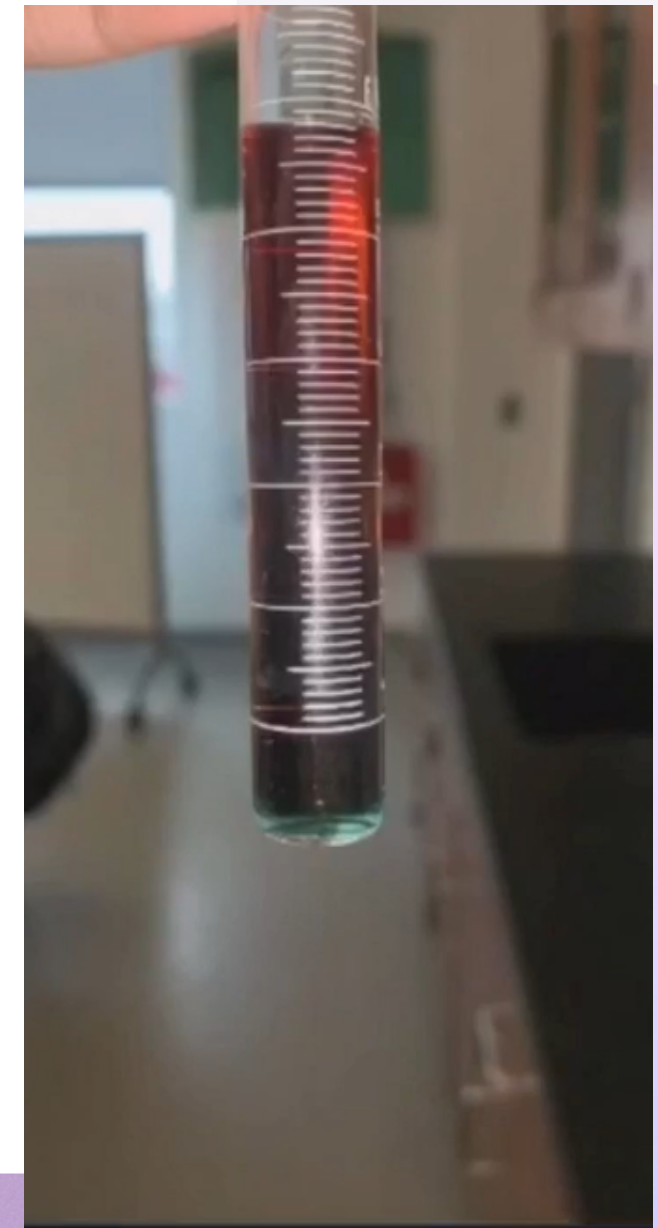


➤ ADD WATER IN TO BOWL



➤ ADD SALT INTO THE BOWL

into the bowl creating salt creating salt water

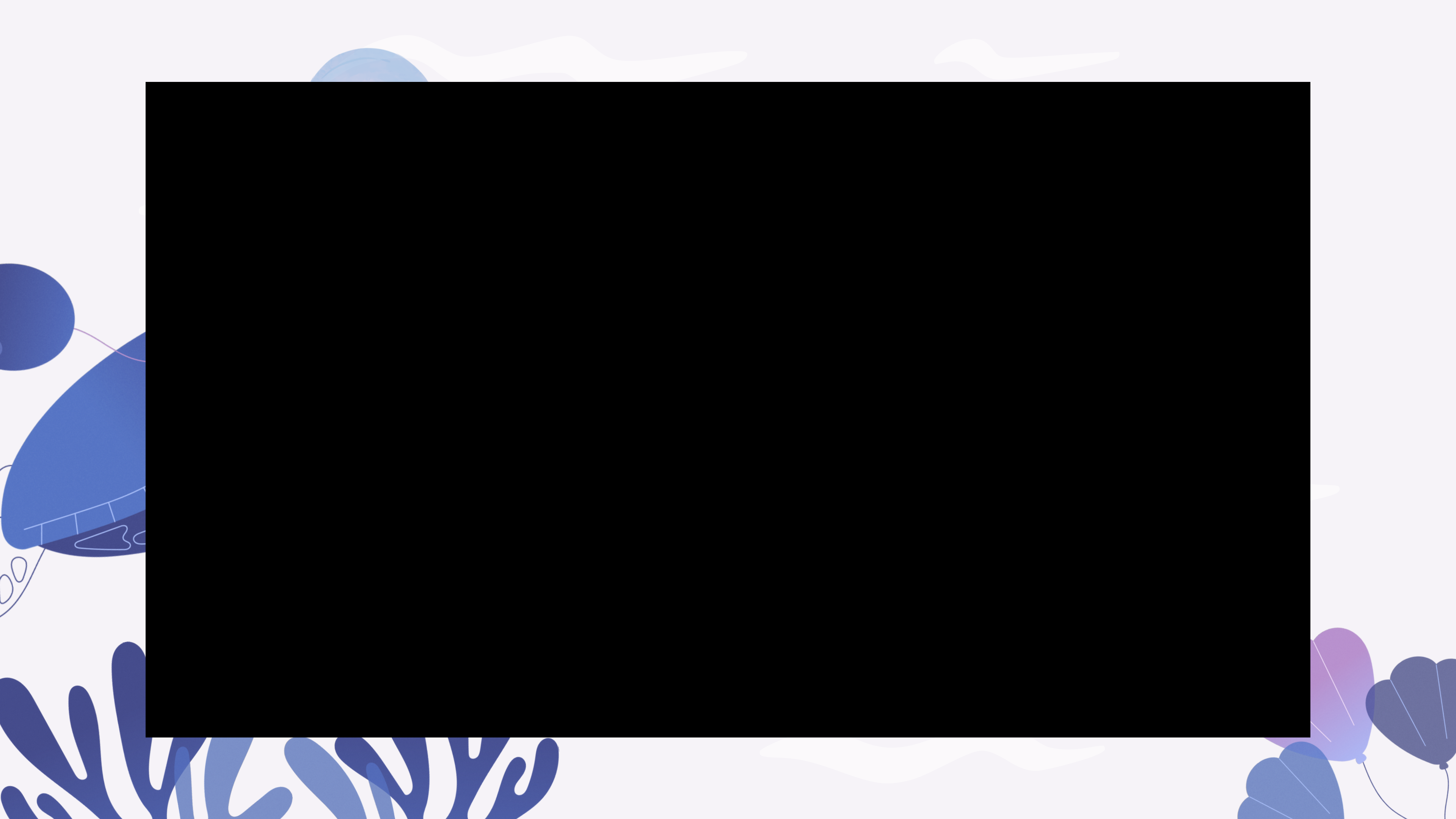


# Challenge #2

To build a trebuchet

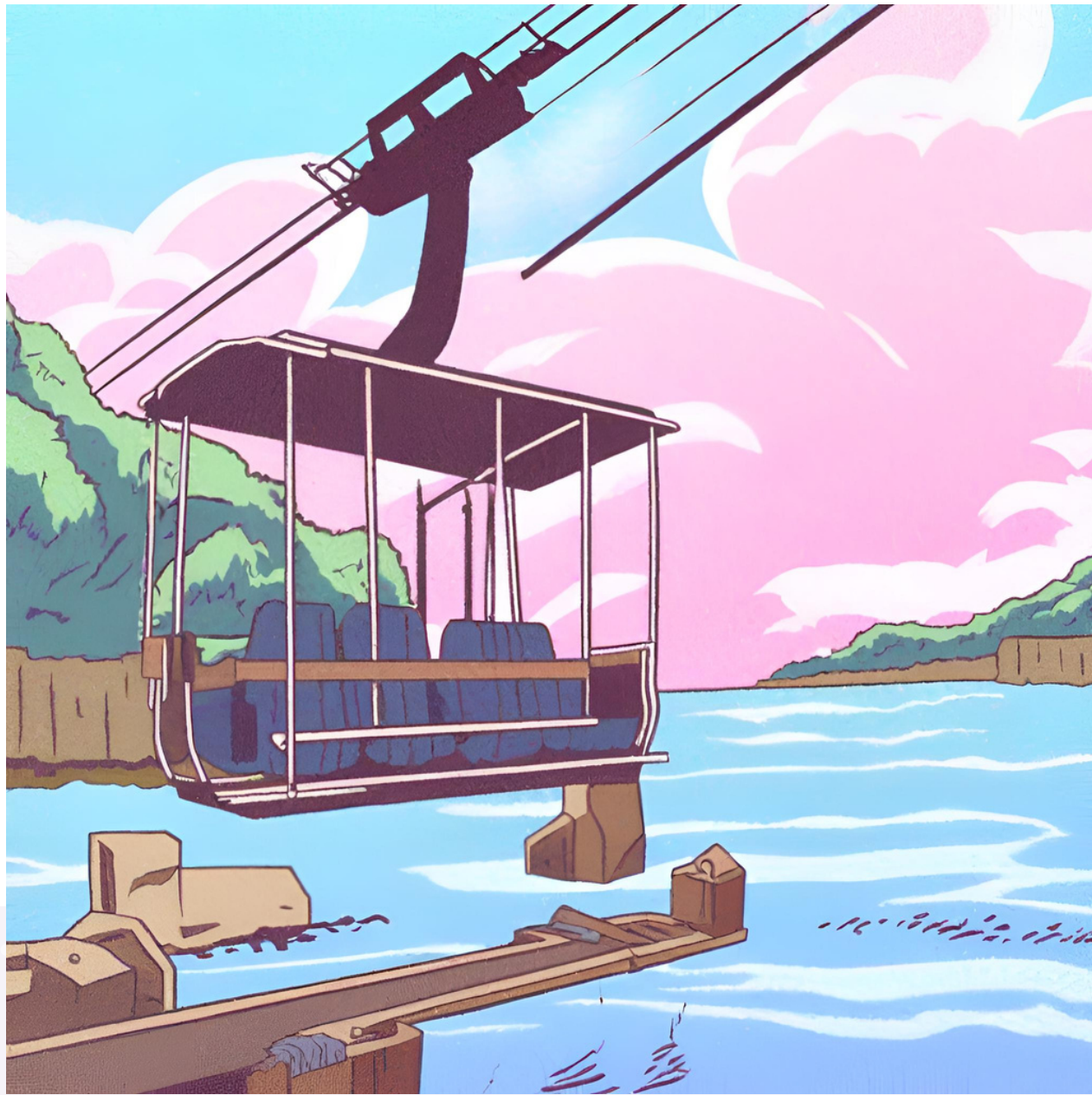


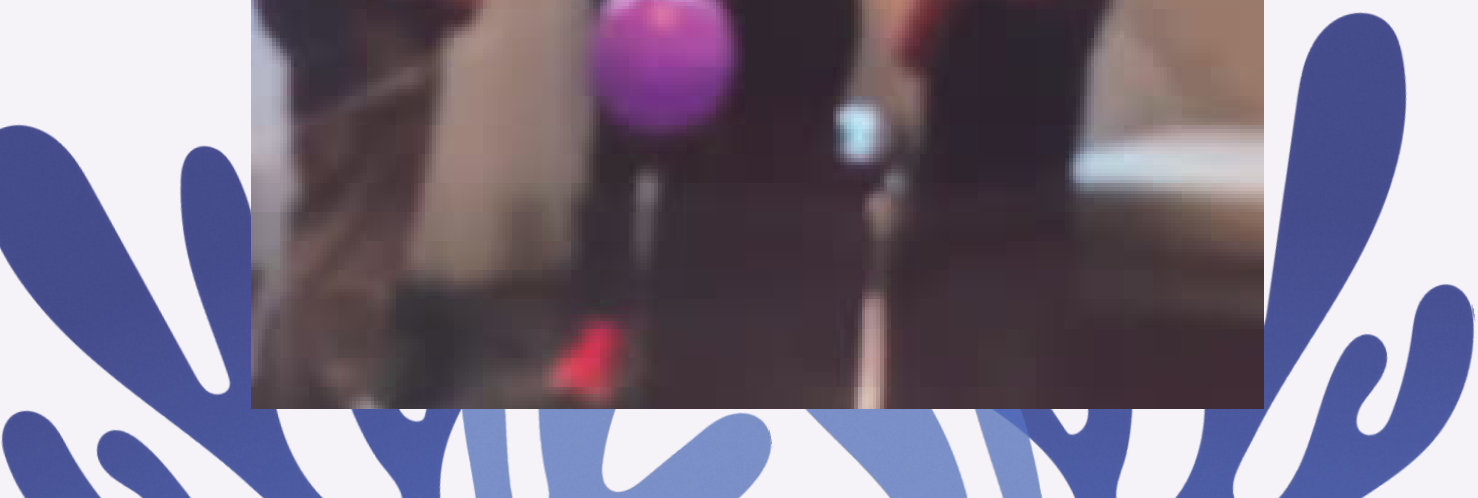


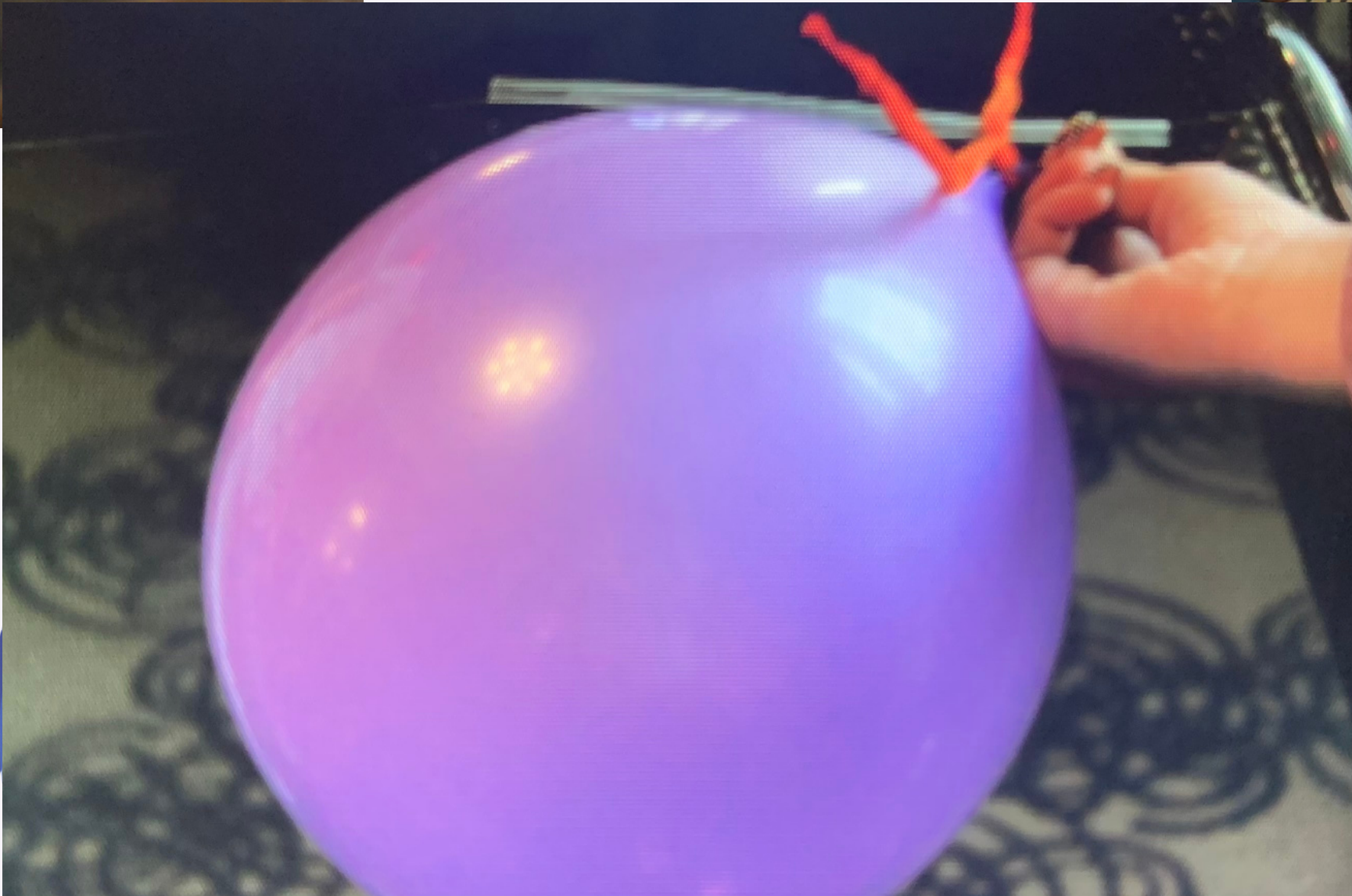
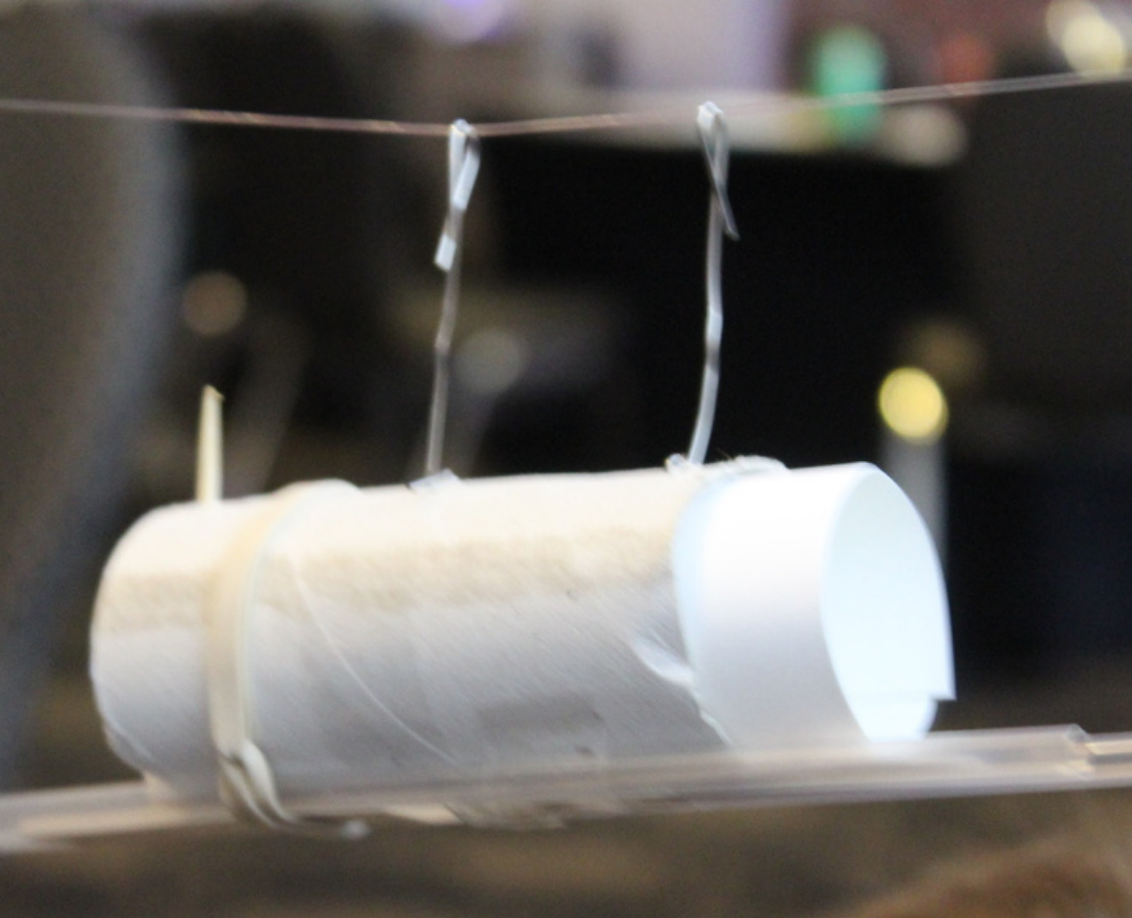


# Challenge #3

To build a cable car









# Struggles

#1

Coming up with a  
design

#2

Building our design

#3

Coming to terms  
with our failure

# Strengths

#1

Working Together

#4

Imagination

#2

Organization

#5

Time management

#3

Positivity

#6

Efficient use of materials



**What have we learned  
from these challenges?**



Thank  
You



The background is a light blue gradient with white wavy lines. It features clusters of balloons in shades of blue, purple, and dark blue at the top corners. In the bottom corners, there are stylized coral reef structures in dark blue. Scattered throughout are various stars: a large purple star, a smaller dark blue star, and a tiny white star outline. There are also several translucent blue spheres of different sizes.

**Questions?**