

# HUMAN KIDNEY GAME

*Break up into equal teams. Each team will have access to an anatomy kit.*

## ROUND 1

*Take apart your kits and identify the kidneys.*

**\*FIRST TEAM TO RAISE THEIR HAND AND IDENTIFY THE KIDNEY WINS THE POINTS FOR THAT ROUND.**

## ROUND 2

*There are two other major organs of the urinary system besides the kidney. What is it?*

**\*STUDENTS MUST CORRECTLY NAME AND LOCATE ORGANS ON KIT. TEAMS CAN GET PARTIAL POINTS IF UNABLE TO IDENTIFY ALL FOUR**

## ROUND 3

*There are four major blood vessels and arteries that are essential to the function of the kidneys. What are they?*

**\*STUDENTS MUST CORRECTLY NAME AND LOCATE ORGANS ON KIT. BONUS QUESTION: WHAT IS THEIR FUNCTION?**

## ROUND 4

*First team to put back together their kit wins*

### **\*POINT SYSTEM AND TIMING**

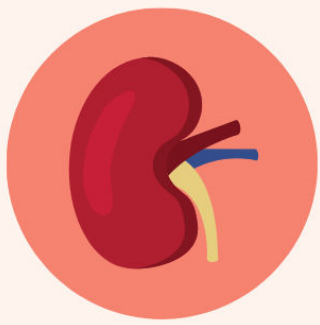
**● EACH ROUND IS WORTH 5 POINTS. IF A TEAM GUESSES INCORRECTLY, THE ROUND IS WORTH MORE POINTS AND THE NEXT TEAM TO GUESS CORRECTLY WINS THAT ROUND WITH THE ACCUMULATED POINTS.**

**● BONUS QUESTION: 3 POINTS**

**● EACH ROUND IS 3-5 MINUTES**

Created by Amonte Simmons for BTE  
Ewing/BTE Trenton

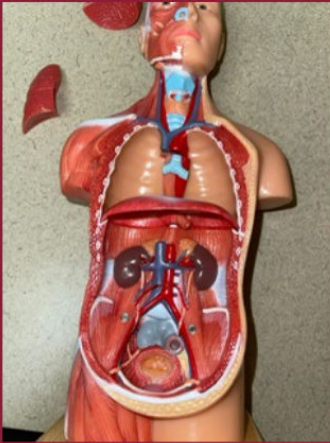




# HUMAN KIDNEY GAME

## Answer Key

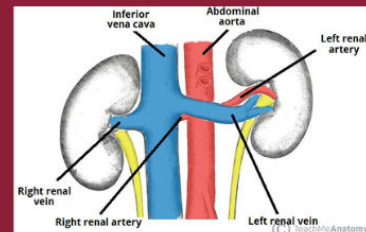
### ROUND 1



### ROUND 2

*Red: Abdominal aorta  
Renal artery*

*Blue: Inferior vena cava  
Renal vein*



### ROUND 3

*Major Organs: Bladder and  
Prostate Gland*

*Function of Bladder: Stores Urine*

*Function of Prostate Gland:  
produce the fluid that nourishes  
and transports sperm (seminal fluid)*

### ROUND 4



*First team  
to put  
back  
together  
their kit  
wins*

